

# HabasitLINK<sup>®</sup>

## M2533 Flush Grid 1"



Your Source For Habasit  
Belting And Chain

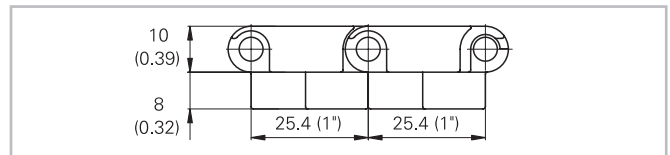
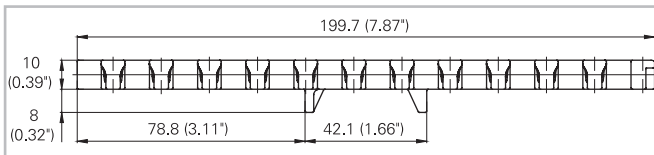
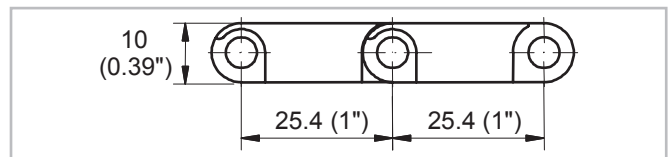
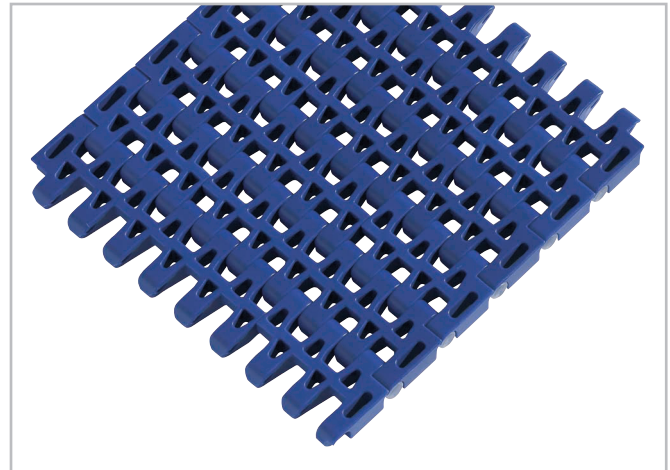
www.StilesEnterprises.com • 1-800-325-4232

### Description

- 35% open area; 60% open contact area; largest opening 5.5x7 mm (0.22"x0.28")
- Excellent for cooling and draining
- Open hinge
- Food approved materials available
- Rod diameter 5 mm (0.2")
- "Open window" sprockets

### Available accessories

- Flights
- Sideguards
- Hold down devices
- GripTop modules
- Tab modules with 2 tabs (Code: - T2)



### Belt data

Belt material		PP	PE	POM		PA +US	PA	
Rod material		PP	PE	PP	PA			
Nominal tensile strength F' <sub>N</sub>	N/m	14000	8000	18000	24700	20000	20000	
	lb/ft	959	548	1233	1692	1370	1370	
Temperature range	°C	5 - 105	-70 - 65	5 - 93	-40 - 93	-46 - 118	-46 - 130	
	°F	40 - 220	-94 - 150	40 - 200	-40 - 200	-50 - 245	-50 - 266	
Temperature maximum (short-term)	°C					135	160	
	°F					275	320	
Belt weight m <sub>B</sub>	kg/m <sup>2</sup>	4.6	5.1	7.1	7.1	5.6	5.6	
	lb/sqft	0.94	1.04	1.45	1.45	1.15	1.15	

Diameter of idling rollers (minimum)		Diameter of support rollers (minimum)		Diameter for gravity take-up and center drive rollers (minimum)		Backbending radius for elevators without sideguards or hold down devices (minimum)		Backbending radius for elevators with sideguards or hold down devices (minimum)	
mm	inch	mm	inch	mm	inch	mm	inch	mm	inch
40	1.6	50	2	100	4	150	6	250	10

Use the largest possible backbending radius for elevators with side guards or hold down devices.

### Standard range of belt widths b<sub>0</sub>

mm (nom.)	150	200	250	300	350	400	450	500	550	600	650	700	750	800	etc.
inch (nom.)	6	8	10	12	14	16	18	20	22	24	26	28	30	32	etc.

Real belt widths are in most cases 0.1% to 0.3% smaller.

Standard belt widths in increments of 50 mm (2"). Non-standard widths are offered in increments of 16.66 mm (0.66"). Smallest possible width 83.4 mm (3.25").